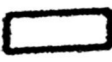

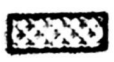



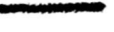


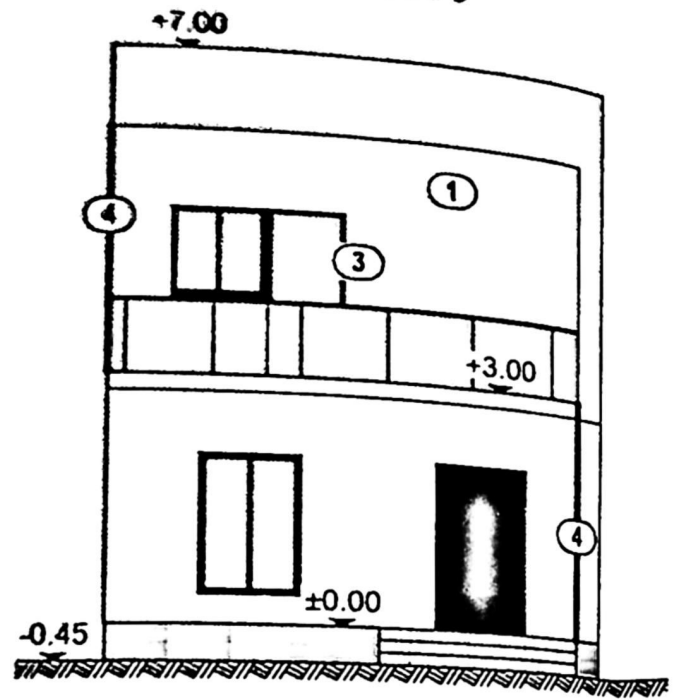
LEGENDĂ:

- Stara = 659 mp
-  Corp C1 locuință parter
Sc = Sd = 107 mp.
-  Corp C2 anaxă parter-GARAJ
Sc = Sd = 18 mp.
- Sc anexari = Sd anexari = 125 mp.
- POT anexari 19%
- C.U.T. anexari 0.19
-  Locuință P+1 propusă
Sc = 69.62 mp.
Sd = 139.24 mp.
- Sc total = 125 + 69.62 = 194.62 mp.
- Sd total = 125 + 139.24 = 264.24 mp.
- POT propusă 30%
- C.U.T. propusă 0.40
-  Terțiere și alte balcoane (plataci)
-  Spații verzi S = 380 mp
-  Terasă necoperită
-  Limita proprietății

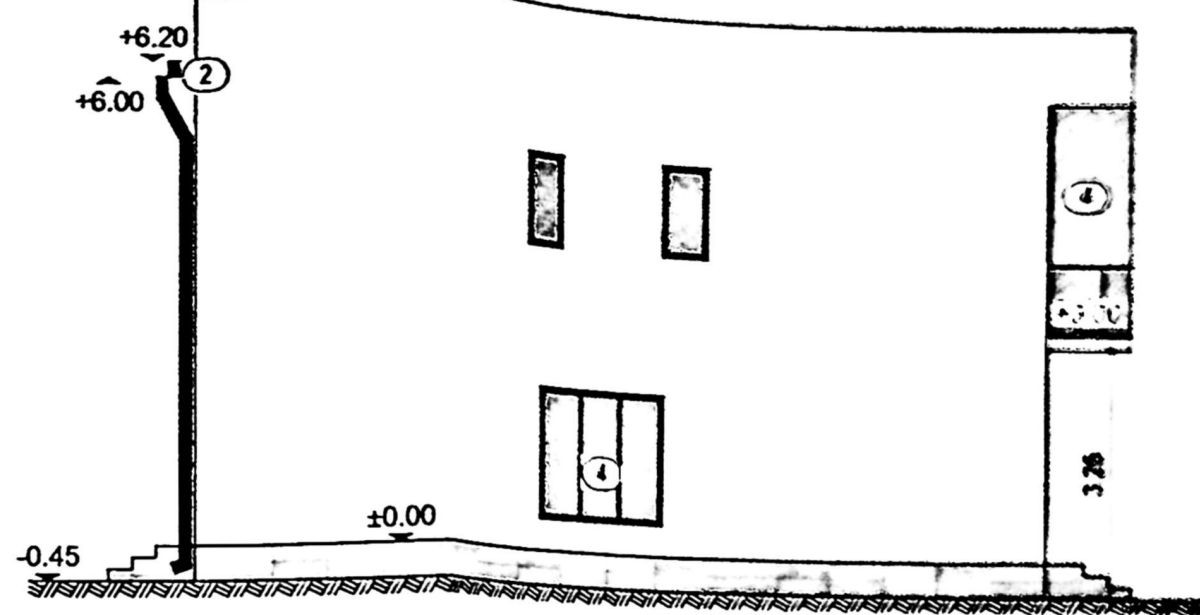
PROIECTANT
 PRIMĂRIA MUNICIPIULUI
 JUDEȚUL BUCUREȘTI
 Nr. 185
 2014

MEMBRU
INVELTOAR

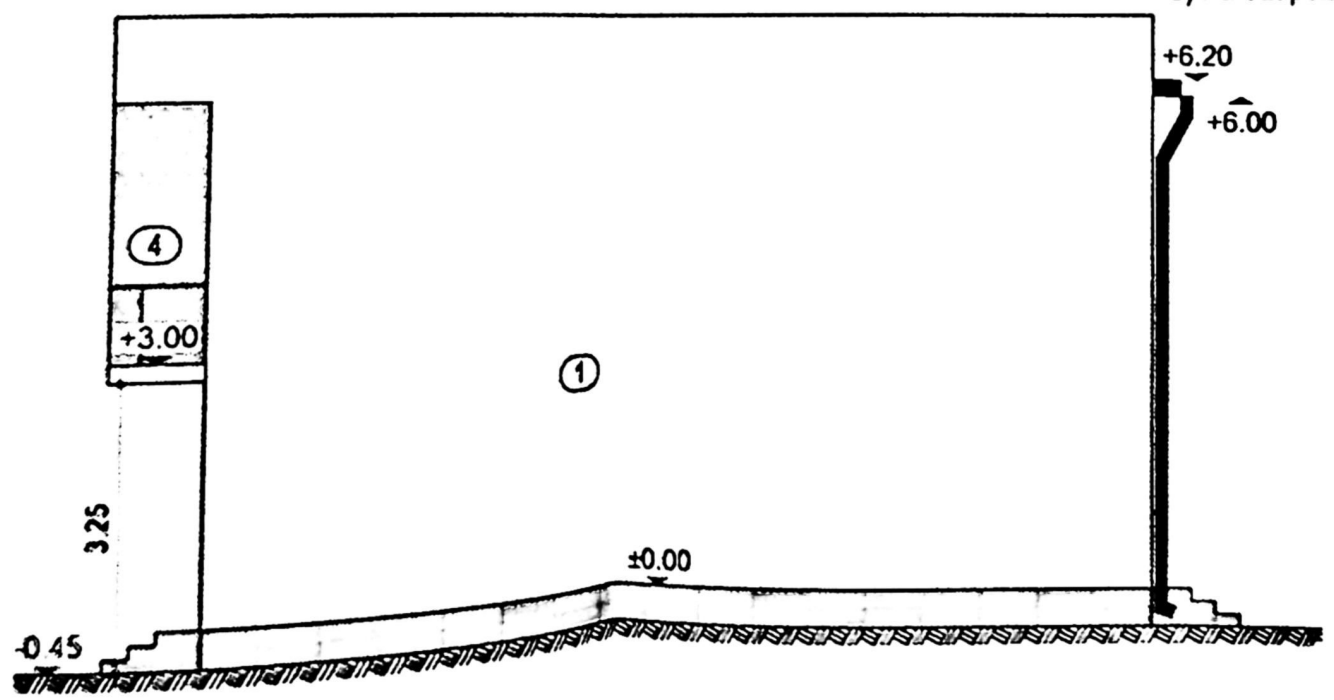
FAȚADA PRINCIPALĂ
SC. 1:100



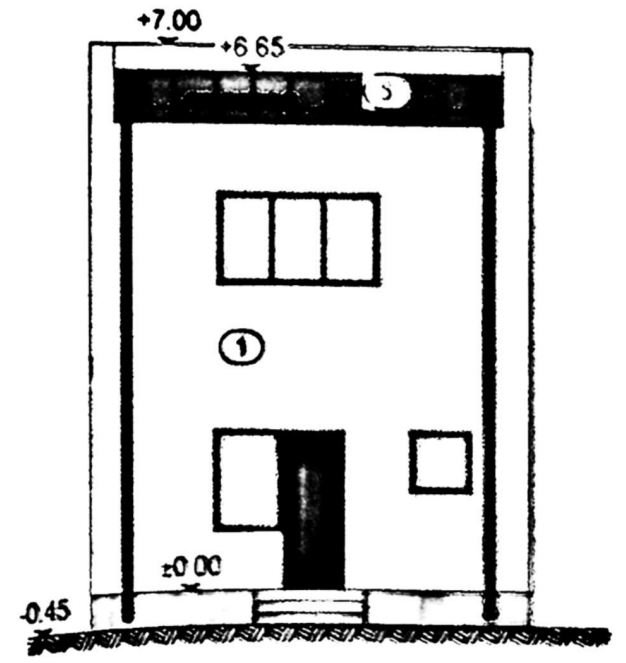
FAȚADA LAT.-STÂNGA
SC. 1:100



FAȚADA LAT.-DREAPTA
SC. 1:100



FATADA POSTERIOARĂ
SC. 1:100



- 1) Tencuială decorativă - culoarea alb
- 2) Îneltoare metalică - culoarea gri
- 3) Tâmplărie PVC - culoarea gri
- 4) Panou opac obturator vedere
- 5) Parazăpezi

185

APLICATIA	PROIECT
SPECIFICATIE	DESENI
SEE PROIECT	PROIECTAT
PROIECTAT	DESENIAT